

KEY

- EXISTING KERB
- EXISTING LINE MARKING
- PROPOSED KERB
- PROPOSED YELLOW LINE MARKING
- PROPOSED YELLOW LINE MARKING WITH LOADING RESTRICTIONS
- PROPOSED WHITE LINE MARKING
- PROPOSED CYCLE SYMBOL (WAYFINDING MARKER TO BE CONFIRMED)
- EXISTING KERB / LINE MARKING TO BE REMOVED
- PROPOSED CARRIAGEWAY SURFACE COURSE FOR RAISED JUNCTION
- PROPOSED FOOTWAY BUILD OUT
- PARKING BAYS TO BE RELOCATED
- PROPOSED/RELOCATED PARKING BAY
- PROPOSED REMOVAL OF PARKING BAY
- EXISTING DIRECTION OF TRAVEL
- CONNECTION TO CENTRAL LONDON CYCLE GRID
- BOROUGH BOUNDARY
- AREA SUBJECT TO THIRD PARTY OR FUTURE SCHEME
- ROUTE ALIGNMENT

DESIGN DEVELOPMENT IS ONGOING AND SUBJECT TO CHANGE FOLLOWING CONSULTATION

| REV | DATE | BY | DESCRIPTION | CHK | APP |
|-----|------------|-----|-------------|-----|-----|
| A | 14.12.2015 | CEP | FIRST ISSUE | RH | NW |

DRAWING STATUS: **FOR CONSULTATION**



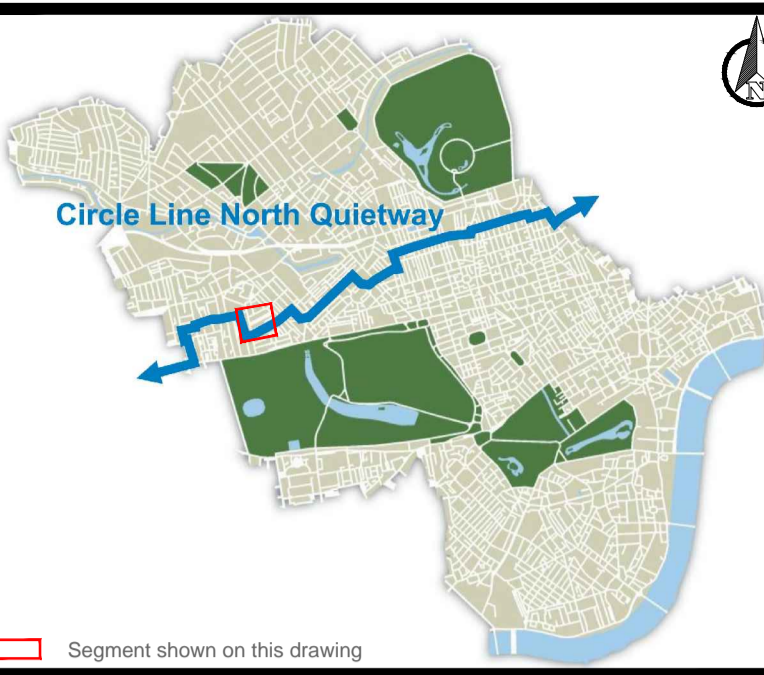
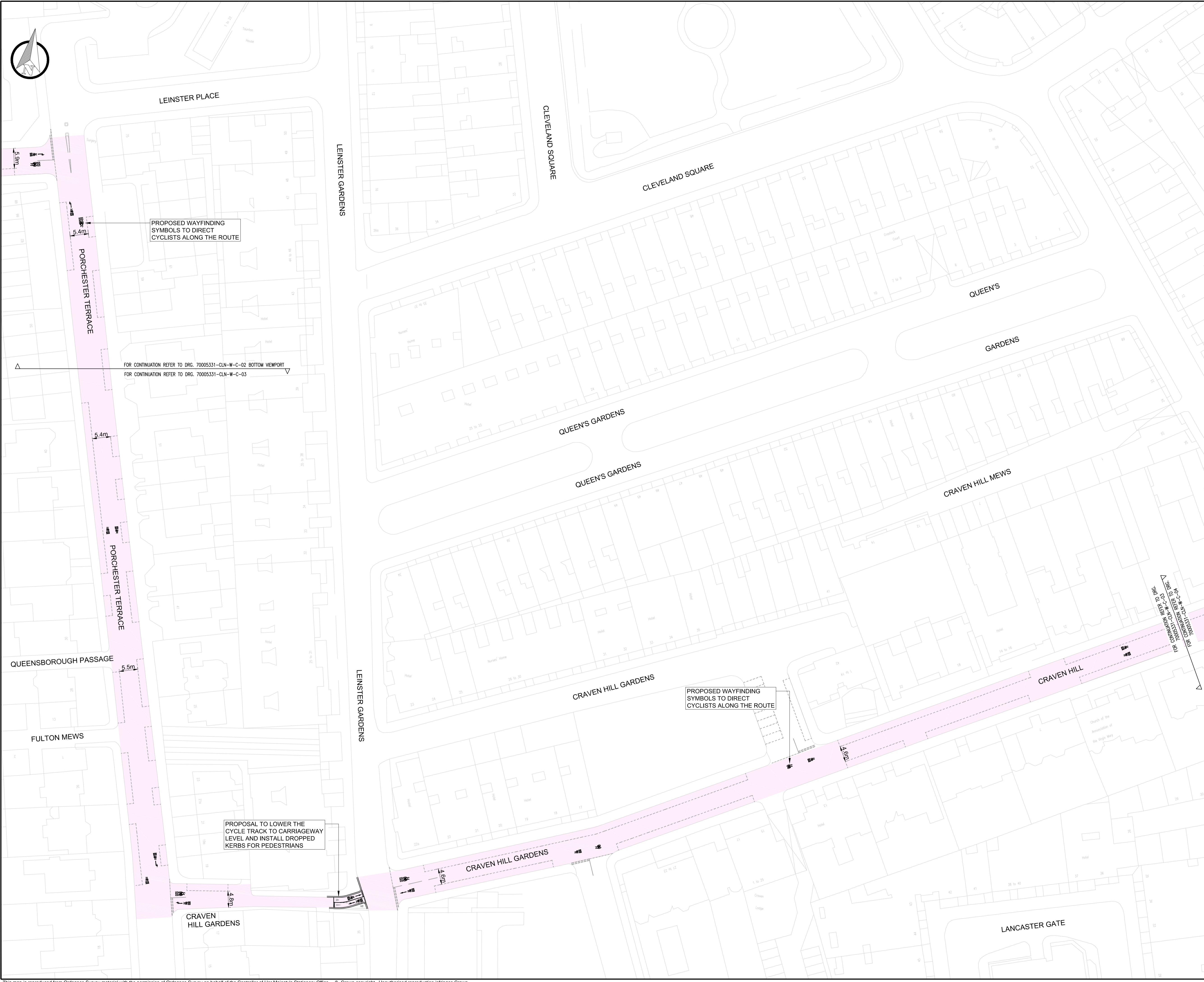
PROJECT: **CENTRAL LONDON CYCLE GRID
QUIETWAY BAYSWATER TO FITZROVIA**

TITLE: **MOSCOW ROAD TO NORFOLK CRESCENT
WITHIN CITY OF WESTMINSTER**

SHEET 1 OF 6

| SCALE @ A1 | DATE | DESIGN/DRAWN | CHECKED | APPROVED | SHEET |
|---------------------|-----------------|--------------|---------|----------|-------|
| 1:500 | 04/11/2015 | FB | RH | NW | A1 |
| JOB No: | FMC PROJECT No: | BREF/DSS No: | | | |
| 70005331 | B1731300 | BR 21505 | | | |
| DRAWING No: | | | | | REV. |
| 70005331-CLN-W-C-01 | | | | | A |

T:\20005331 - Circle Line North/E Models and Drawings\Drawings\Stage 1\Comment\70005331-CLN-W-C-01.dwg 16 Dec 2015 - 2:20pm



KEY

- EXISTING KERB
- EXISTING LINE MARKING
- PROPOSED KERB
- PROPOSED YELLOW LINE MARKING
- PROPOSED YELLOW LINE MARKING WITH LOADING RESTRICTIONS
- PROPOSED WHITE LINE MARKING
- PROPOSED CYCLE SYMBOL (WAYFINDING MARKER TO BE CONFIRMED)
- EXISTING KERB / LINE MARKING TO BE REMOVED
- PROPOSED CARRIAGEWAY SURFACE COURSE FOR RAISED JUNCTION
- PROPOSED FOOTWAY BUILD OUT
- PARKING BAYS TO BE RELOCATED
- PROPOSED / RELOCATED PARKING BAY
- PROPOSED REMOVAL OF PARKING BAY
- EXISTING DIRECTION OF TRAVEL
- CONNECTION TO CENTRAL LONDON CYCLE GRID
- BOROUGH BOUNDARY
- AREA SUBJECT TO THIRD PARTY OR FUTURE SCHEME
- ROUTE ALIGNMENT

DESIGN DEVELOPMENT IS ONGOING AND SUBJECT TO CHANGE FOLLOWING CONSULTATION

| REV | DATE | BY | DESCRIPTION | CHK | APP |
|-----|------------|-----|-------------|-----|-----|
| A | 14.12.2015 | CEP | FIRST ISSUE | RH | NW |

DRAWING STATUS: **FOR CONSULTATION**



PROJECT
CENTRAL LONDON CYCLE GRID
QUIETWAY BAYSWATER TO FITZROVIA

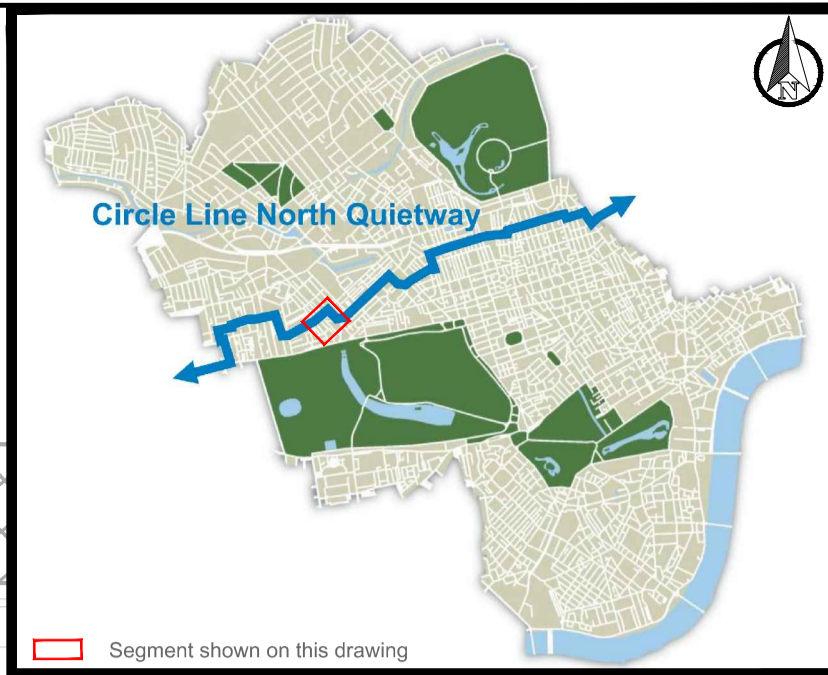
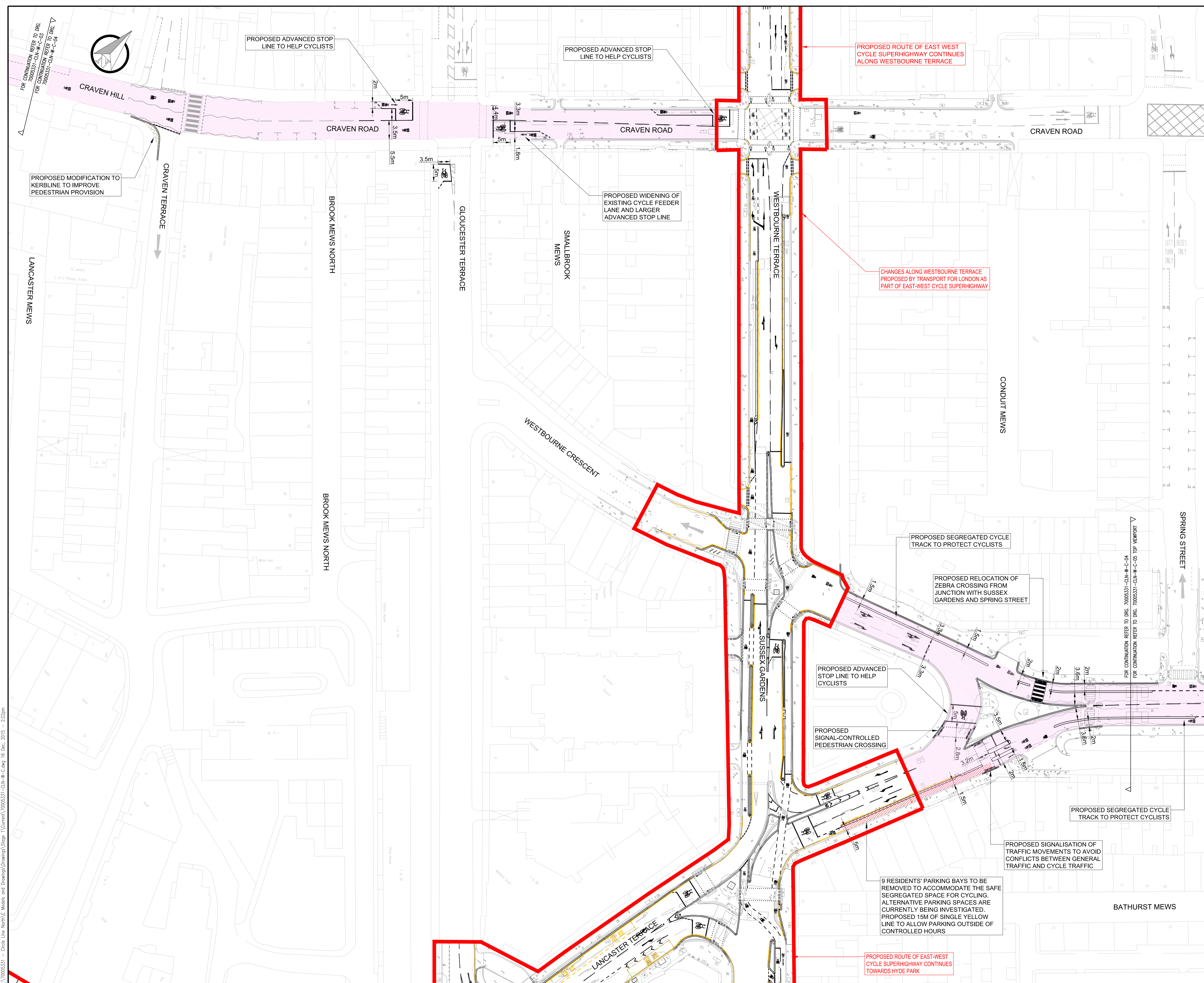
TITLE
MOSCOW ROAD TO NORFOLK CRESCENT
WITHIN CITY OF WESTMINSTER
SHEET 3 OF 6

| SCALE @ A1 | DATE | DESIGN/DRAWN | CHECKED | APPROVED | SHEET |
|------------|------------|--------------|---------|----------|-------|
| 1:500 | 04/11/2015 | FB | RH | NW | A1 |

| JOB No. | FMC PROJECT No. | BREF/DSB No. |
|----------|-----------------|--------------|
| 70005331 | B1731300 | BR 21505 |

| DRAWING No. | REV. |
|---------------------|------|
| 70005331-CLN-W-C-03 | A |

T:\70005331 - Circle Line North/E Models and Drawings\Drawings\Stage 1\Comment\70005331-CLN-W-C-03.dwg 16 Dec 2015 - 2:22pm



KEY

- EXISTING KERB
- EXISTING LINE MARKING
- PROPOSED KERB
- PROPOSED YELLOW LINE MARKING
- PROPOSED YELLOW LINE MARKING WITH LOADING RESTRICTIONS
- PROPOSED WHITE LINE MARKING
- PROPOSED CYCLE SYMBOL (WAYFINDING MARKER TO BE CONFIRMED)
- EXISTING KERB / LINE MARKING TO BE REMOVED
- PROPOSED CARRIAGEWAY SURFACE COURSE FOR RAISED JUNCTION
- PROPOSED FOOTWAY BUILD OUT
- PARKING BAYS TO BE RELOCATED
- PROPOSED/RELOCATED PARKING BAY
- PROPOSED REMOVAL OF PARKING BAY
- EXISTING DIRECTION OF TRAVEL
- CONNECTION TO CENTRAL LONDON CYCLE GRID
- BOROUGH BOUNDARY
- AREA SUBJECT TO THIRD PARTY OR FUTURE SCHEME
- ROUTE ALIGNMENT

DESIGN DEVELOPMENT IS ONGOING AND SUBJECT TO CHANGE FOLLOWING CONSULTATION

| REV | DATE | BY | DESCRIPTION | CHK | APP |
|-----|------------|-----|-------------|-----|-----|
| A | 14.12.2015 | CEP | FIRST ISSUE | RH | NW |

DRAWING STATUS: **FOR CONSULTATION**



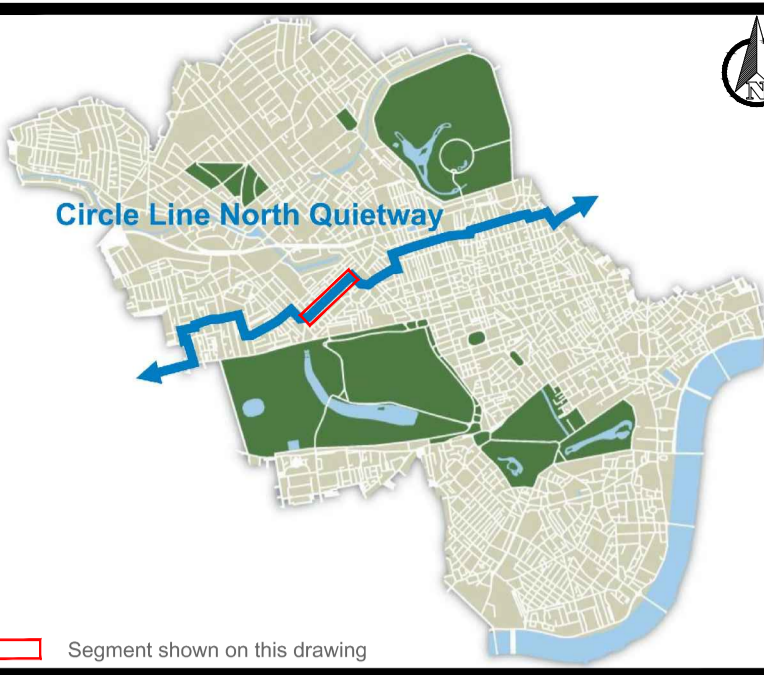
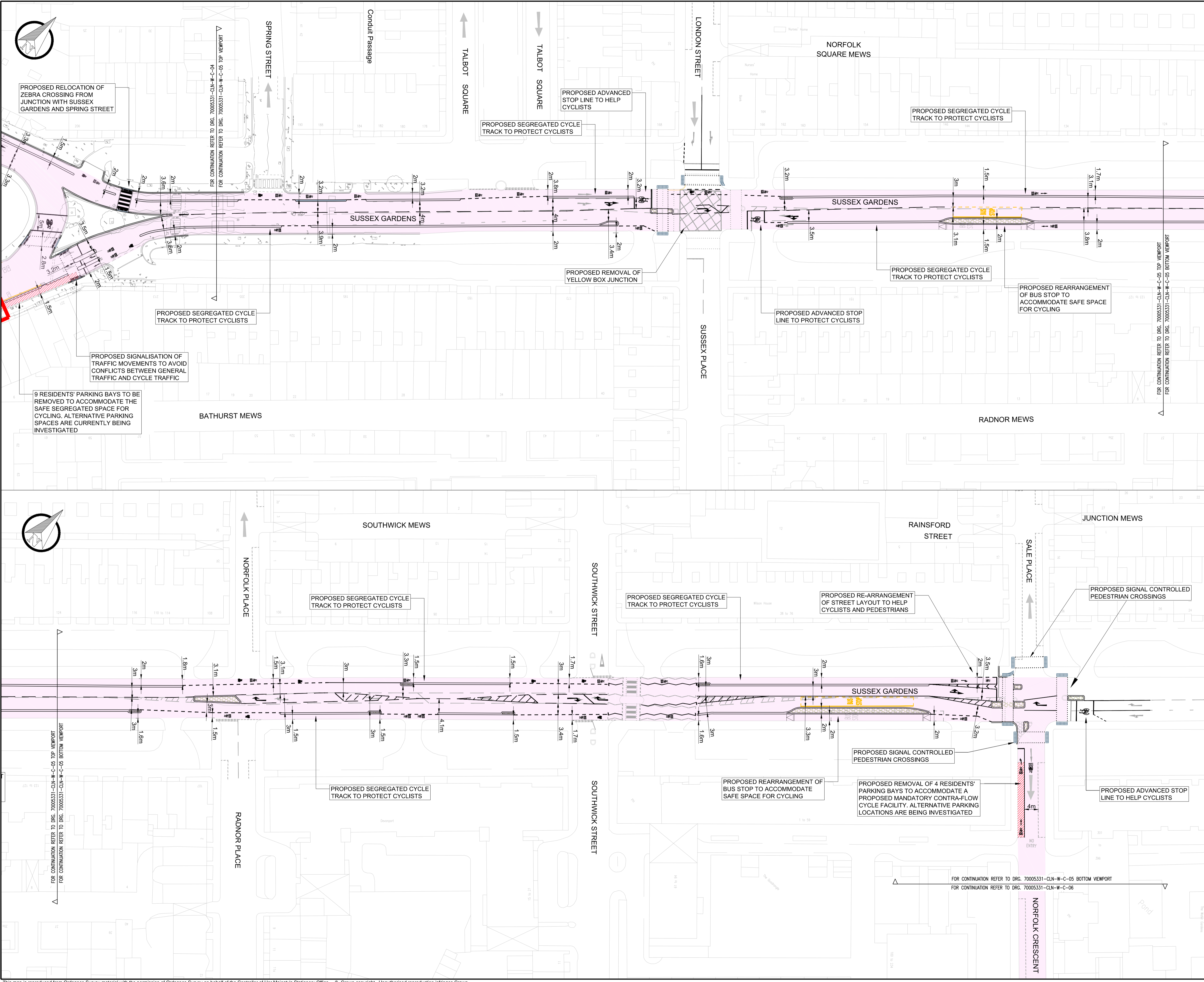
PROJECT: **CENTRAL LONDON CYCLE GRID
QUIETWAY BAYSWATER TO FITZROVIA**

TITLE: **MOSCOW ROAD TO NORFOLK CRESCENT
WITHIN CITY OF WESTMINSTER**

SHEET 4 OF 6

| SCALE @ A1 | DATE | DESIGN/DRAWN | CHECKED | APPROVED | SHEET |
|---------------------|-----------------|---------------|---------|----------|-------|
| 1:500 | 04/11/2015 | FB | RH | NW | A1 |
| JOB NO: | FMC PROJECT NO: | BRIEF/DSS NO: | | | |
| 70005331 | B1731300 | BR 21505 | | | |
| DRAWING NO: | | | | | REV. |
| 70005331-CLN-W-C-04 | | | | | A |

This map is reproduced from Ordnance Survey material with the permission of Ordnance Survey on behalf of the Controller of Her Majesty's Stationery Office © Crown copyright. Unauthorised reproduction infringes Crown copyright and may lead to prosecution or civil proceedings. (WCC)LA 10009597



KEY

- EXISTING KERB
- EXISTING LINE MARKING
- PROPOSED KERB
- PROPOSED YELLOW LINE MARKING
- PROPOSED YELLOW LINE MARKING WITH LOADING RESTRICTIONS
- PROPOSED WHITE LINE MARKING
- PROPOSED CYCLE SYMBOL (WAYFINDING MARKER TO BE CONFIRMED)
- EXISTING KERB / LINE MARKING TO BE REMOVED
- PROPOSED CARRIAGEWAY SURFACE COURSE FOR RAISED JUNCTION
- PROPOSED FOOTWAY BUILD OUT
- PARKING BAYS TO BE RELOCATED
- PROPOSED / RELOCATED PARKING BAY
- PROPOSED REMOVAL OF PARKING BAY
- EXISTING DIRECTION OF TRAVEL
- CONNECTION TO CENTRAL LONDON CYCLE GRID
- BOROUGH BOUNDARY
- AREA SUBJECT TO THIRD PARTY OR FUTURE SCHEME
- ROUTE ALIGNMENT

DESIGN DEVELOPMENT IS ONGOING AND SUBJECT TO CHANGE FOLLOWING CONSULTATION

| REV | DATE | BY | DESCRIPTION | CHK | APP |
|-----|------------|-----|-------------|-----|-----|
| A | 14.12.2015 | CEP | FIRST ISSUE | RH | NW |

DRAWING STATUS: **FOR CONSULTATION**



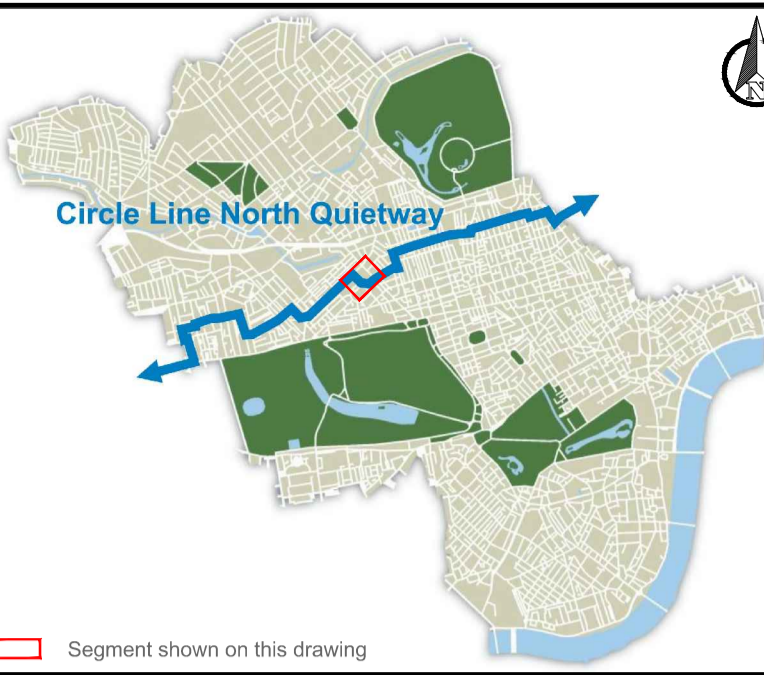
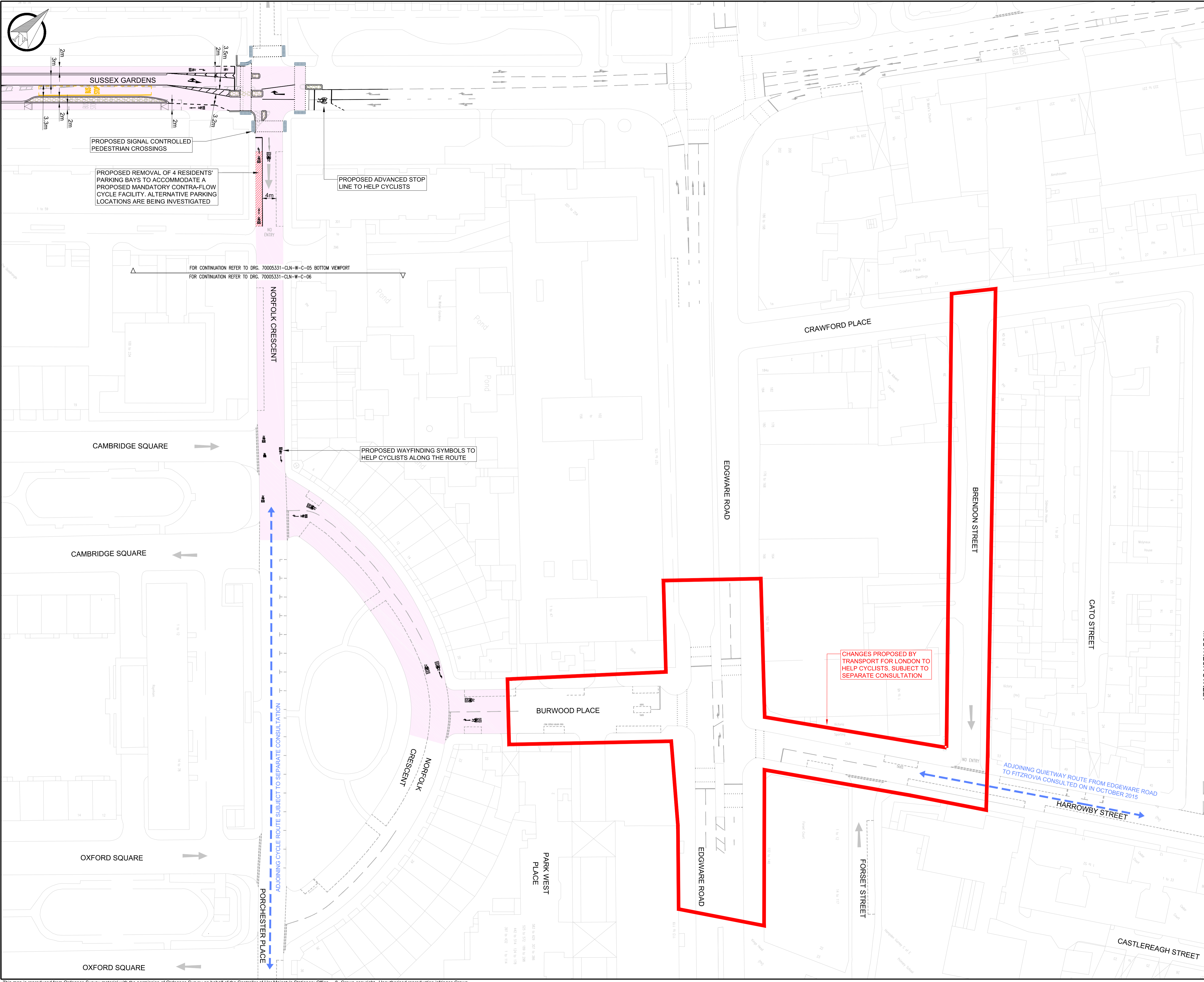
PROJECT: **CENTRAL LONDON CYCLE GRID QUIETWAY BAYSWATER TO FITZROVIA**

TITLE: **MOSCOW ROAD TO NORFOLK CRESCENT WITHIN CITY OF WESTMINSTER**

SHEET 5 OF 6

| SCALE @ A1 | DATE | DESIGN/DRAWN | CHECKED | APPROVED | SHEET |
|-------------|---------------------|-----------------|----------|--------------|----------|
| 1:500 | 04/11/2015 | FB | RH | NW | A1 |
| JOB No: | 70005331 | FMC PROJECT No: | B1731300 | BREF/DSS No: | BR 21505 |
| DRAWING No: | 70005331-CLN-W-C-05 | REV: | A | | |

This map is reproduced from Ordnance Survey material with the permission of Ordnance Survey on behalf of the Controller of Her Majesty's Stationery Office © Crown copyright. Unauthorised reproduction infringes Crown copyright and may lead to prosecution or civil proceedings. (WCC)LA 10009597



- KEY
- EXISTING KERB
 - EXISTING LINE MARKING
 - PROPOSED KERB
 - PROPOSED YELLOW LINE MARKING
 - PROPOSED YELLOW LINE MARKING WITH LOADING RESTRICTIONS
 - PROPOSED WHITE LINE MARKING
 - PROPOSED CYCLE SYMBOL (WAYFINDING MARKER TO BE CONFIRMED)
 - EXISTING KERB / LINE MARKING TO BE REMOVED
 - PROPOSED CARRIAGEWAY SURFACE COURSE FOR RAISED JUNCTION
 - PROPOSED FOOTWAY BUILD OUT
 - PARKING BAYS TO BE RELOCATED
 - PROPOSED/RELOCATED PARKING BAY
 - PROPOSED REMOVAL OF PARKING BAY
 - EXISTING DIRECTION OF TRAVEL
 - CONNECTION TO CENTRAL LONDON CYCLE GRID
 - BOROUGH BOUNDARY
 - AREA SUBJECT TO THIRD PARTY OR FUTURE SCHEME
 - ROUTE ALIGNMENT

DESIGN DEVELOPMENT IS ONGOING AND SUBJECT TO CHANGE FOLLOWING CONSULTATION

| REV | DATE | BY | DESCRIPTION | CHK | APP |
|-----|------------|-----|-------------|-----|-----|
| A | 14.12.2015 | CEP | FIRST ISSUE | RH | NW |

DRAWING STATUS: **FOR CONSULTATION**



PROJECT: CENTRAL LONDON CYCLE GRID
 QUIETWAY BAYSWATER TO FITZROVIA
 TITLE: MOSCOW ROAD TO NORFOLK CRESCENT
 WITHIN CITY OF WESTMINSTER
 SHEET 6 OF 6

| SCALE @ A1 | DATE | DESIGN/DRAWN | CHECKED | APPROVED | SHEET |
|---------------------|-----------------|--------------|---------|----------|-------|
| 1:500 | 04/11/2015 | FB | RH | NW | A1 |
| JOB No: | FMC PROJECT No: | BREF/DSS No: | | | |
| 70005331 | B1731300 | BR 21505 | | | |
| DRAWING No: | | | | | REV. |
| 70005331-CLN-W-C-06 | | | | | A |

T:\20005331 - Circle Line North\E Models and Drawings\Drawings\Stage 1\Content\70005331-CLN-W-C-06.dwg 16 Dec 2015 11:22:49am